

Triple7 Heavy Duty Application Sheet

Distributor:

International Corrosion Services Pty Ltd

Phone: +61 (0) 8 9497 3500

Email: sales@internationalcs.com.au

Web: www.internationalcs.com.au



envirofluid
FOR A BETTER WORLD



HEAVY DUTY

QUICK BREAK HEAVY DUTY CLEANER & DEGREASER

Triple7 Heavy Duty is a unique blend of natural seed esters and oleo alcohols which when combined, create a powerful cleaning agent. The **Triple7 Heavy Duty** liquid formulation contains a powerful surfactant system and a botanical based solvent which gives you the benefit of extra solvency power when cleaning.

This powerful water-based formulation removes food and beverage soils, oils and lubricants, blood, mould, and mildew without reacting or damaging the treated surface.

Most importantly, **Triple7 Heavy Duty** has no special handling or storage requirements and the product is environmentally responsible.

Triple7 Heavy Duty is free of Petroleum distillates, builders & reagents, glycol ethers, volatile organic compounds (VOCs), terpenes, caustics, and synthetics.

Benefits

- Highly concentrated & non corrosive
- Adds extra solvency power to cleaning
- Cleans and degreases
- Cleans pipework systems
- Maintains flow rates
- No special storage requirements
- Suitable for use in confined spaces
- Readily biodegradable & organic listed
- Suitable for use in food processing areas
- Cleans hard to clean surfaces
- Non-corrosive to equipment & machinery
- Maintains the natural balance of ecosystems

Key Features

Triple7 Heavy Duty is non-toxic, non-flammable, non-carcinogenic, derived from renewable resources, and safe to use, store and dispose of.

Applications

Automotive

For truck wheels, and extremely dirty engines and undercarriages, mix a 1:1 solution of **Triple7 Heavy Duty**. Spray on, allow to stand for 5 minutes then rinse with clear, high pressure water.

For tyre walls, apply a 1:10 to 3:10 solution of product, agitate with a stiff brush, then rinse.

Degreasing

Triple7 Heavy Duty is an effective degreaser for swab, spray or soak tank applications on painted or unpainted surfaces and ferrous or non-ferrous metals.

For medium to large applications, apply the product with a sprayer (use in concentrated form for heavy deposits). Let stand for 5 minutes, scrub if necessary, and rinse off with warm water (50°C) or a final steam rinse.

Degreasing (continued)

Very heavy duty degreasing projects such as charred oil or fuel enamel, often require a solvent to expedite the cleaning process. If so apply **Triple7 Easysolve**, let stand for 10 minutes, then apply a 1:10 solution of **Triple7 Heavy Duty** at 40°C, followed by a warm water rinse.

Please note: that where a warm water pressure clean is used, the solution strength of **Triple7 Heavy Duty** may be reduced to 2:100, followed by a final water rinse.

The following dilution rates are guidelines only and each application depends on temperature, dwell time and agitation.

Extra heavy grease deposits: 1:1 - 1:2 parts water.
Heavy to moderate deposits: 1:2 - 1:10 parts water.
Moderate to light deposits: 1:10 - 1:100 parts water.

Marine Applications

Triple7 Heavy Duty is used for degreasing applications in a marine environment and has the following advantages:

- Does not cause an emulsion
- Assists oil/water separators and grease trap performance
- Does not damage rubbers, o-rings or seals
- Cleans into creases, joins and seals
- Is non-ionic – works by ‘lifting and releasing’ to give a better clean.
- Is low foaming, reducing problems in waste tanks.
- Excellent for closed environments due to reduced toxins.
- Keeps drainlines clean.

Garages

For greasy driveways and garage floors, mix a ratio of 1:1 **Triple7 Heavy Duty** and water. Brush with a stiff broom. Allow to penetrate for one hour then brush and rinse.

Rinse from in front of you and move forward, aiming the hose or spray gun at an angle from the ground, to lift the grime and roll it away from you.

Hospitality Applications

Concourses, ceramic tiles, pavers and concrete paths

Triple7 Heavy Duty works best using a hot water high pressure washer. Atomisation poses no problem as the product is non-hazardous to people or clothing when used as directed.

Pre-treat difficult areas with a 1:5 solution of the product in water and let stand until soiling is loosened. For normal applications, mix 1:100 to 2:100 solution (stronger if necessary) and spray apply. Brush with a broom for ingrained dirt and allow to stand for a few minutes.

If using a pressure washer, start at one edge holding the spray nozzle at approx. 20cm from the surface at a 45° angle and move forward, so that the water can penetrate under the loosened grime and roll it in front of the spray nozzle. Two passes may be necessary for deep in-grained stains.

On vertical surfaces, always start at the bottom of the vertical surface to be cleaned and apply the solution upward. The actual cleaning is accomplished by rinsing with water. Two passes may be required to remove hardened soil or deep stains in concrete and masonry.

Floors and tiles

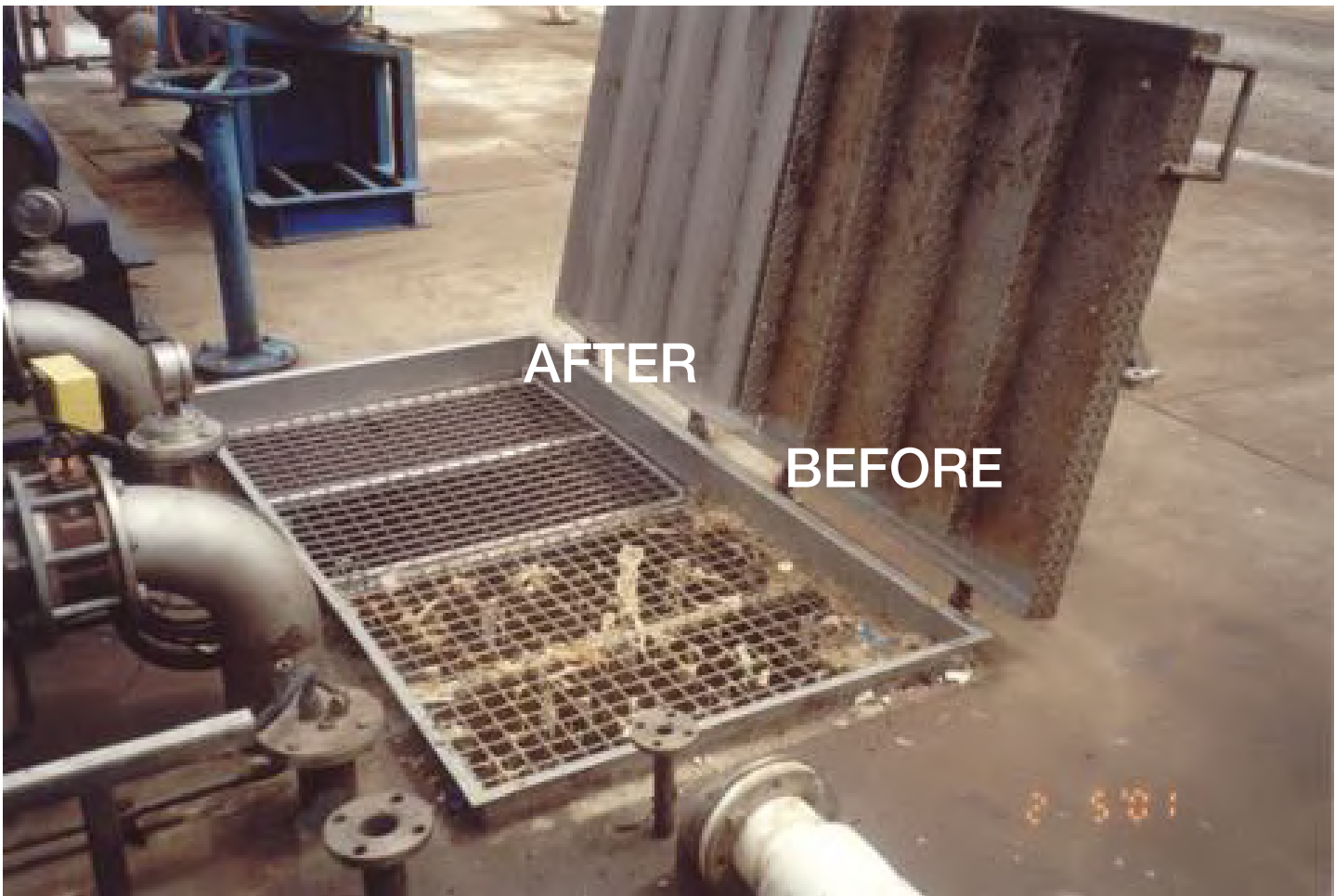
Triple7 Heavy Duty is used for mopping wooden, vinyl and ceramic floors. For light soiling use a 1:100 to 2:100 solution in warm water and mop surface. No rinsing is necessary.

If the contaminant is heavy with grease and oils, use a 1:10 solution of **Triple7 Heavy Duty** in hot water. Spray on, allow to stand for 5 minutes and scrub with a broom or stiff brush, then rinse off with warm to hot water. Too strong a mix will leave floors tacky and may remove polish. If desired add ethanol to the water to aid drying.

To remove a heavy wax build-up, mix a 1:1 solution of product in hot water, spray apply, allow to stand for 30 minutes, and wash off with hot water. Repeat if necessary.



A section of pavement cleaned with
Triple7 Heavy Duty



Cleaning of waste water pit covers.



Triple7 Heavy Duty cleaning of machinery (only the front section has been cleaned).